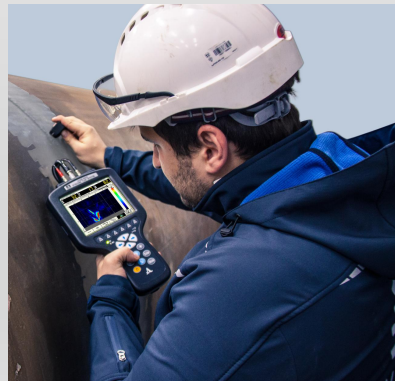


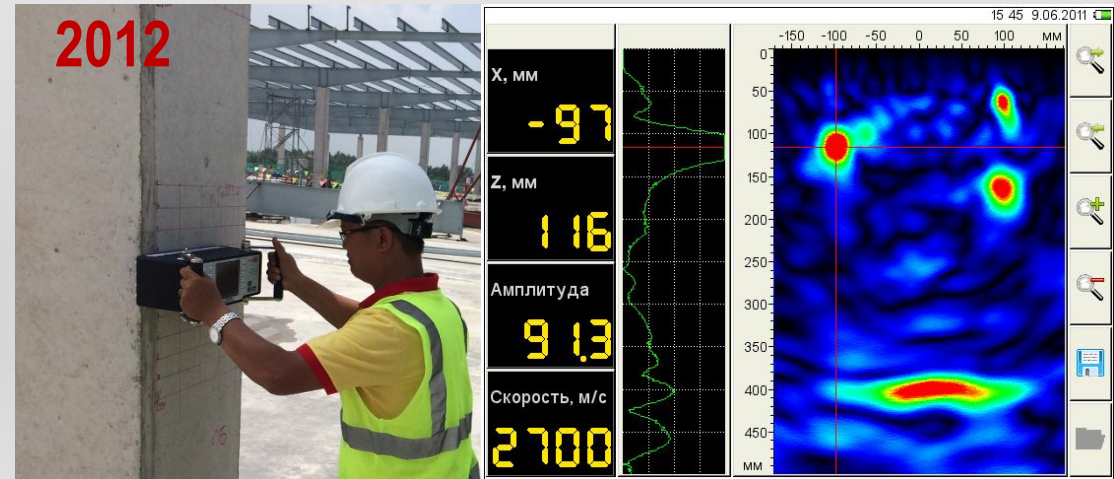


超声检测系统 俄罗斯和国际市场超过30年

产品和技术



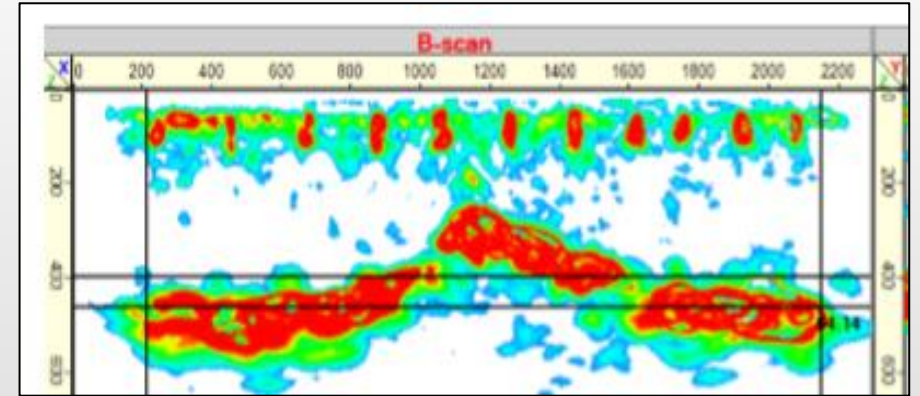
混凝土超声波断层扫描



混凝土超声波断层扫描



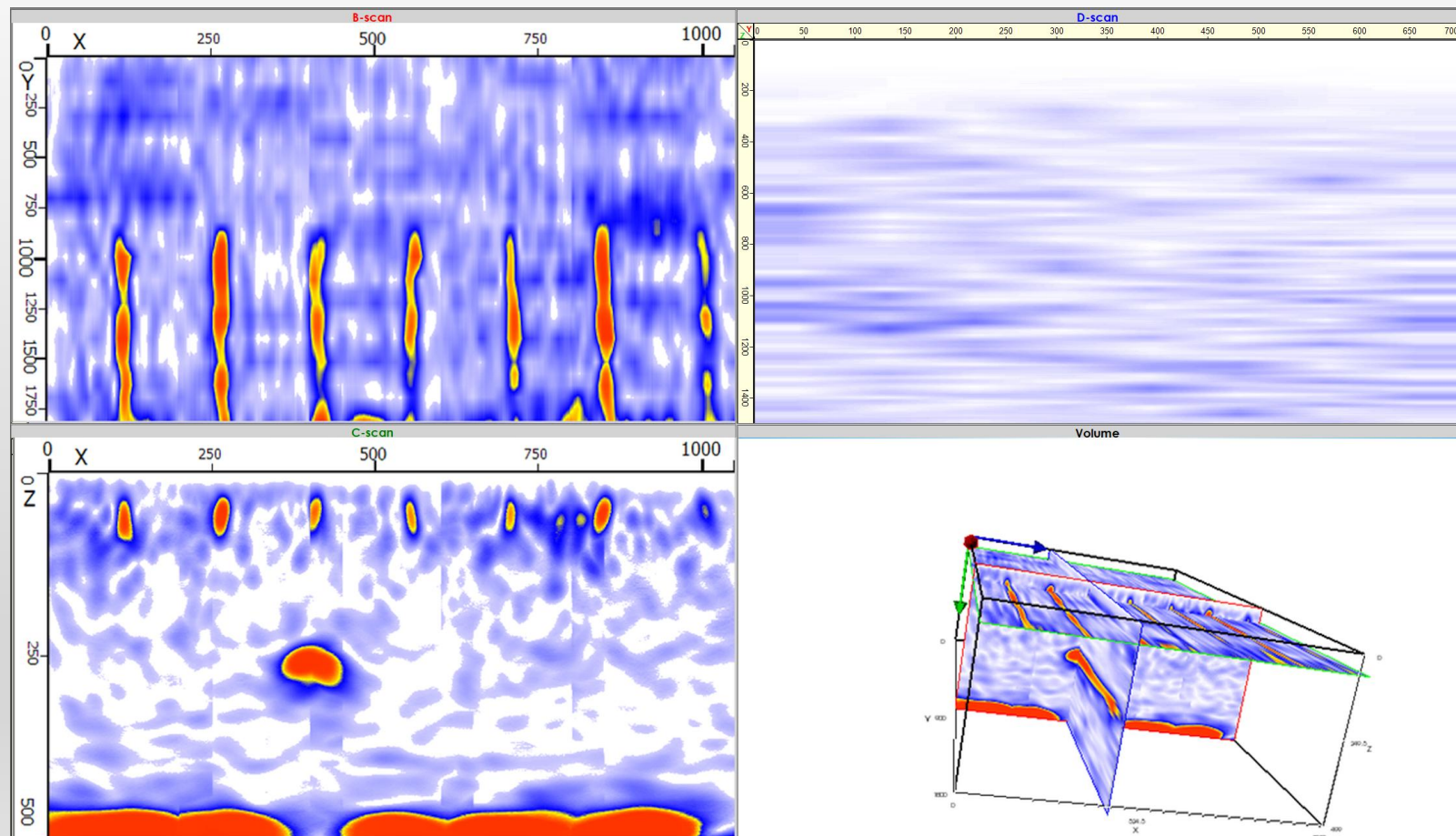
单面进入物体厚度测量



混凝土超声波断层扫描



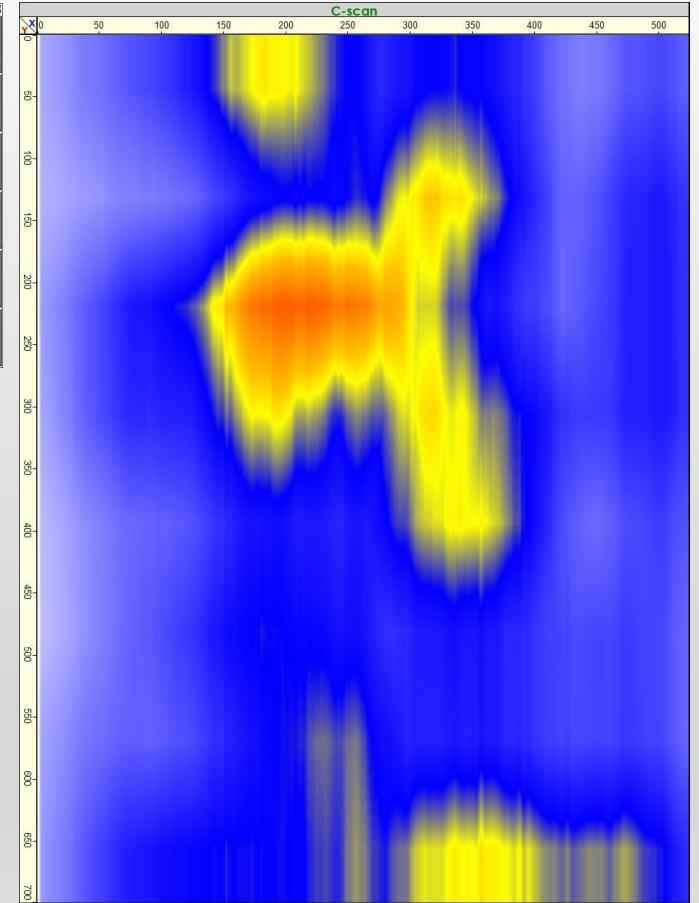
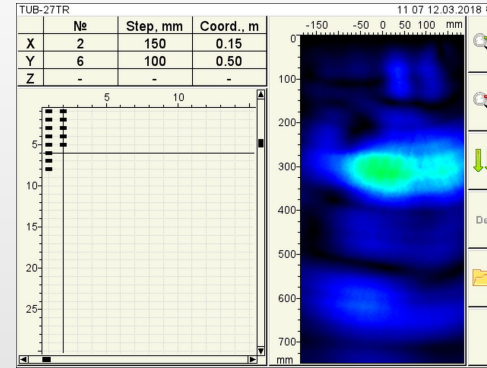
钢筋、锚定螺栓、管道和电缆通道的定位



混凝土超声波断层扫描



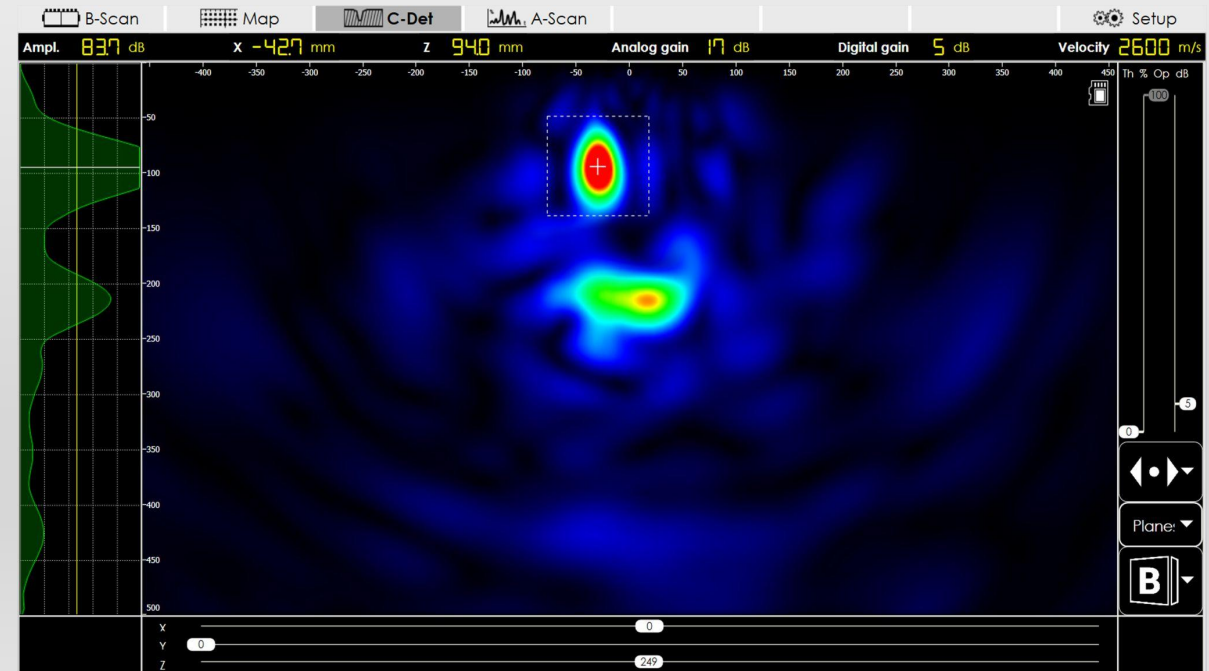
检测隧道管片



混凝土超声波断层扫描



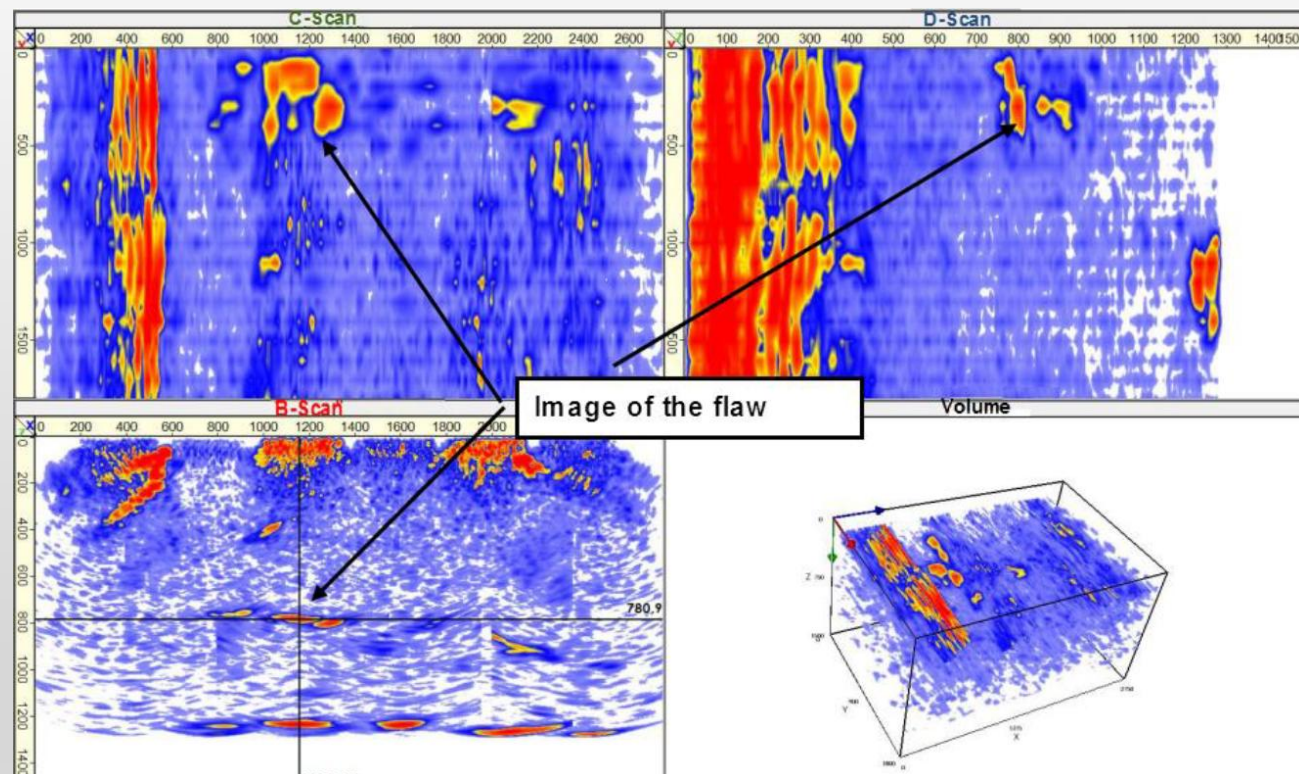
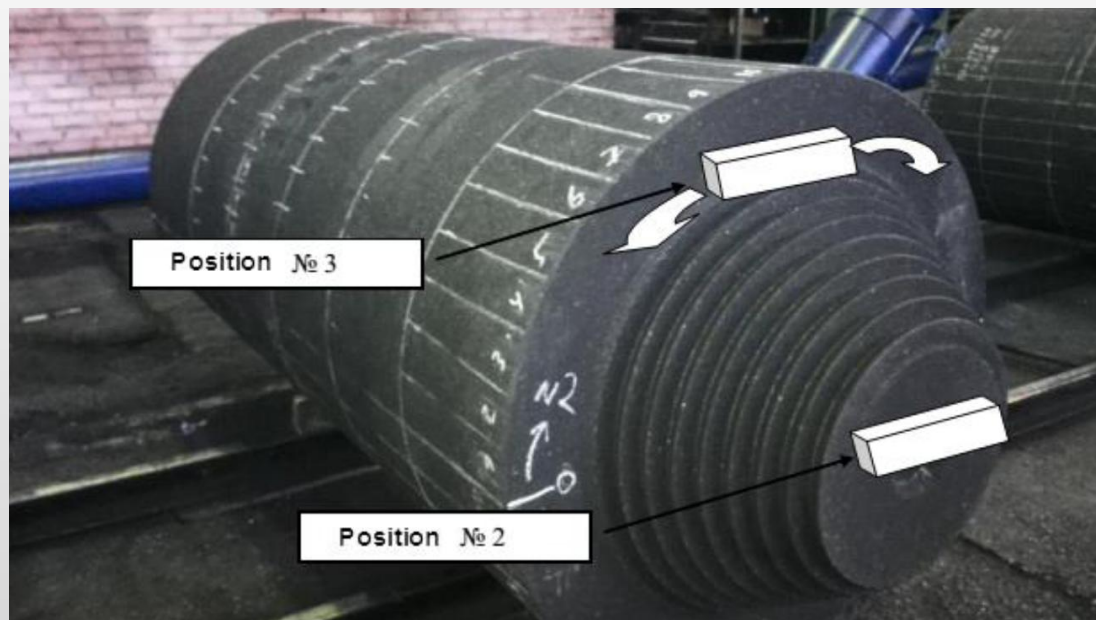
材料缺陷检测：水槽、偏析、裂缝等



混凝土超声波断层扫描



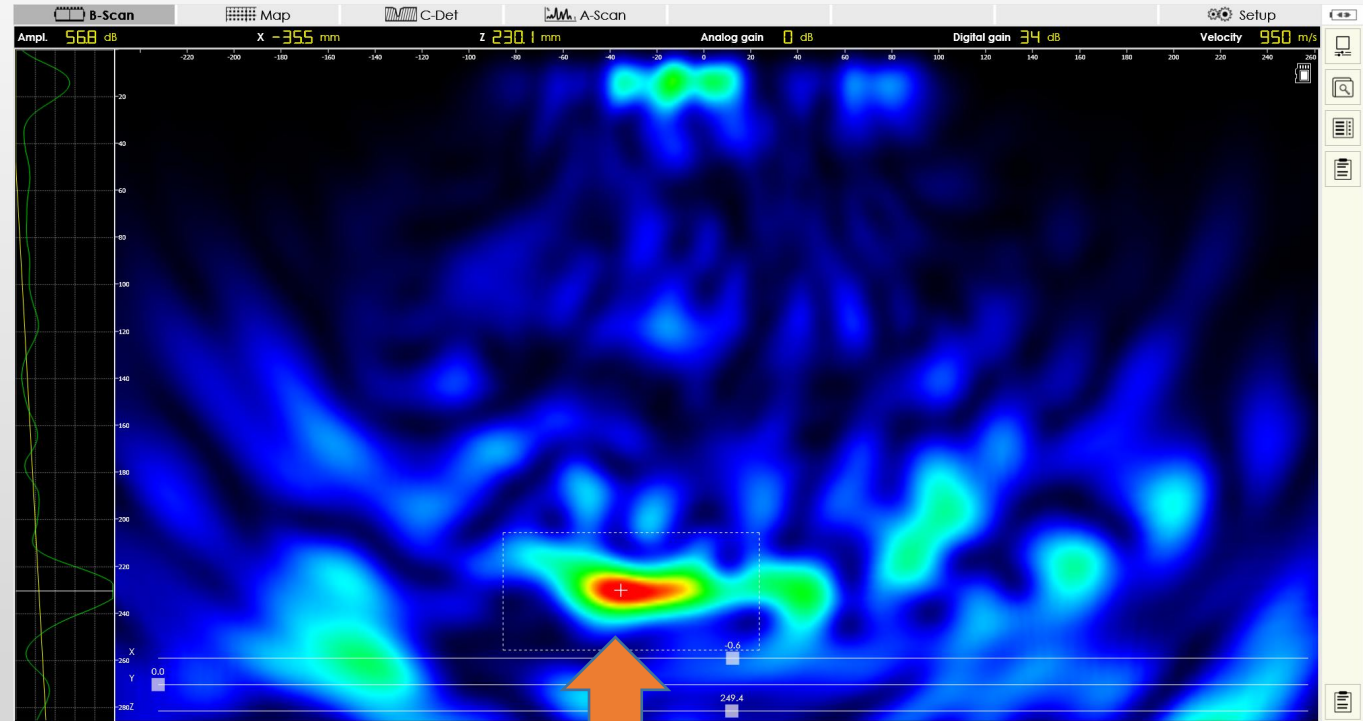
碳电极检验



超声波断层扫描



奶酪检测



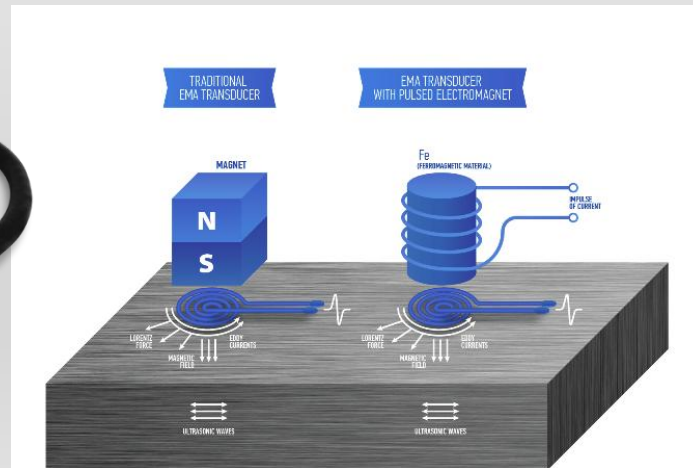
Backwall indication

金属超声波控制



脉冲磁测厚仪

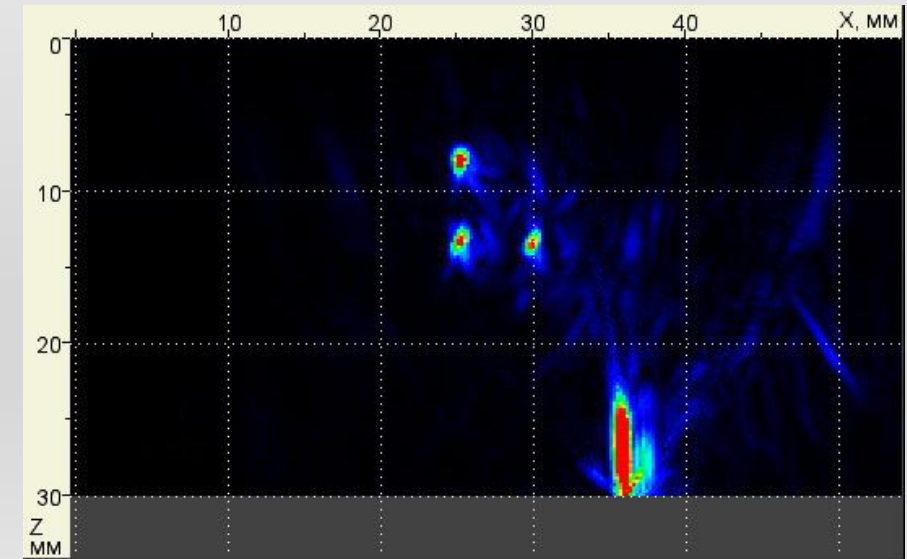
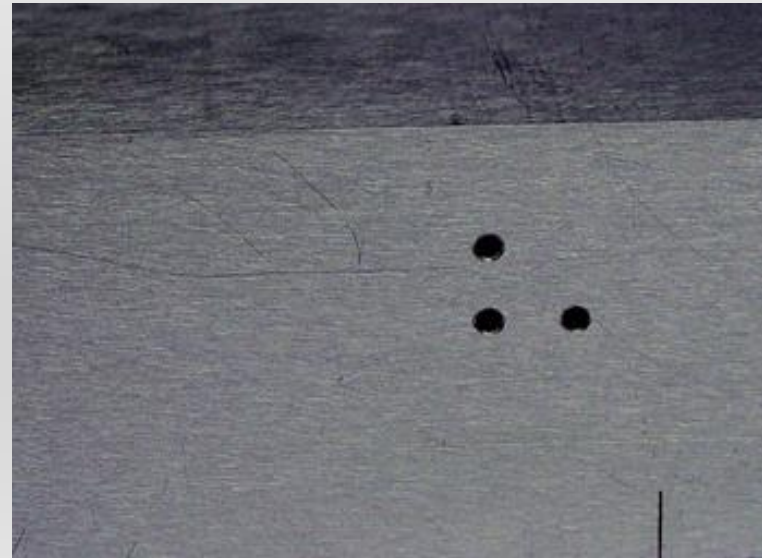
- 世界上第一个永久磁铁电磁厚度计
- 无接触液测厚仪
- 表面不规则/污垢情况下检测
- 涂层检测
- 在高达900°C热环境中检测



金属超声波控制



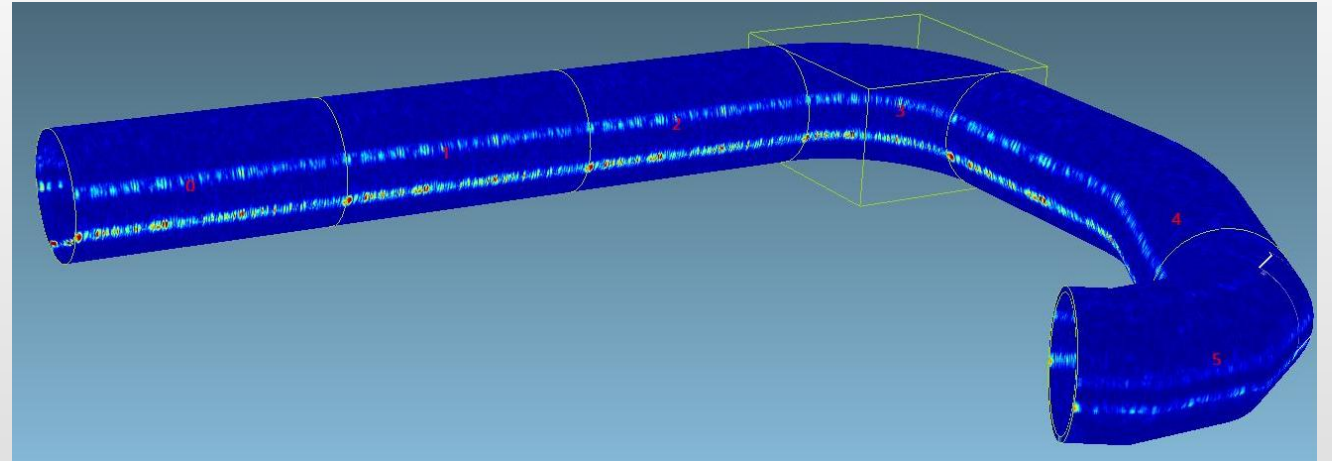
- 紧凑型中央探伤仪
- 支持FMC/TFM技术
- 金属截面实时可视化
- 集成到扫描系统中



扫描系统



气体压缩机站管道检测机器人系统



扫描系统



管道表面裂缝自动检测

